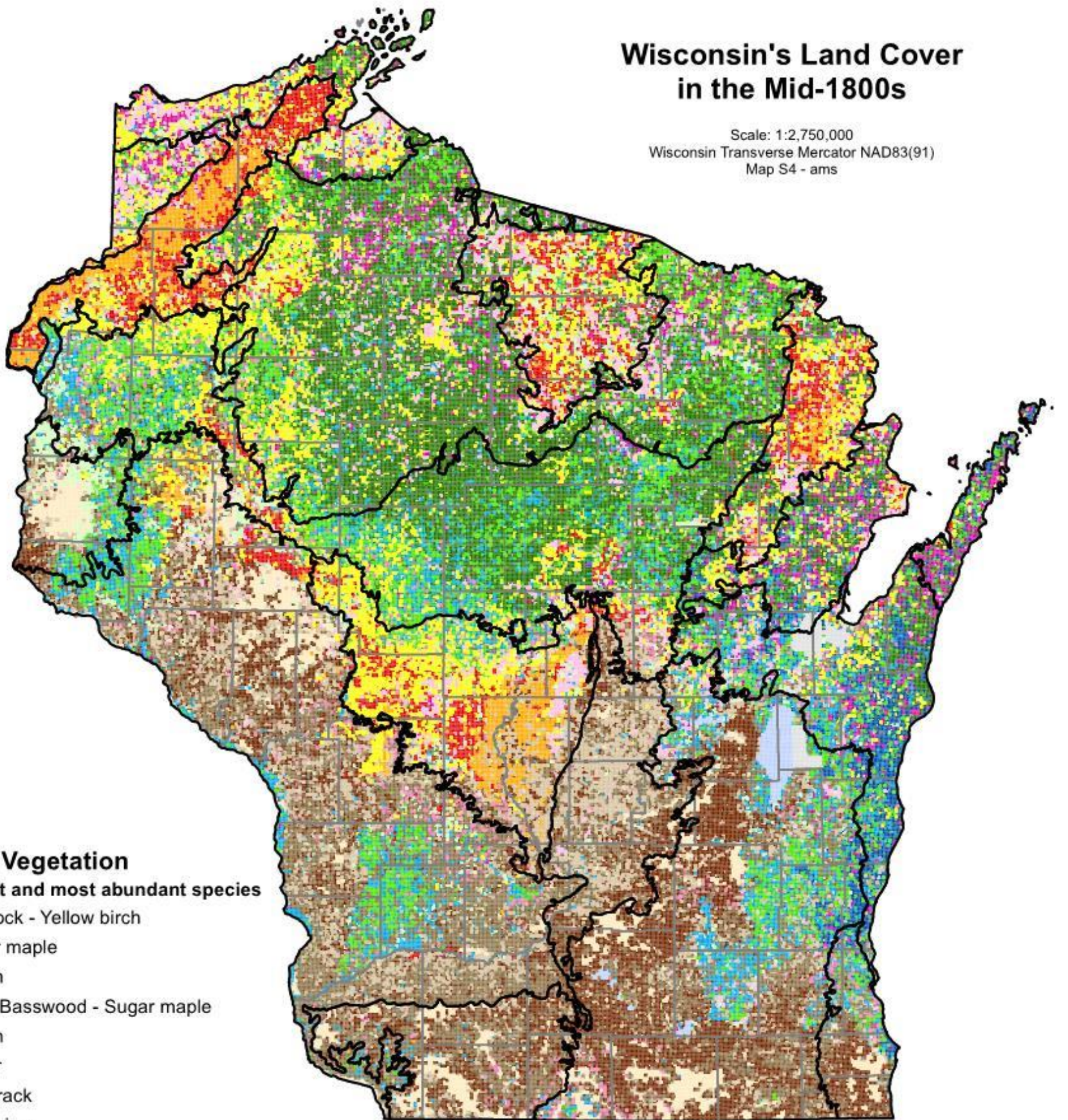


APPENDIX 4.5.1-1: Land Cover in the Mid-1800s









Wisconsin's Land Cover in the Mid-1800s

Scale: 1:2,750,000
 Wisconsin Transverse Mercator NAD83(91)
 Map S4 - ams



Native Vegetation

Dominant and most abundant species

-  Hemlock - Yellow birch
-  Sugar maple
-  Aspen
-  Elm - Basswood - Sugar maple
-  Beech
-  Cedar
-  Tamarack
-  Jack pine
-  Red pine
-  White pine
-  Red oak
-  Black oak - Jack oak
-  Bur oak
-  White oak
-  Prairie
-  Water
-  No data
-  Ecological Landscape
-  County Boundaries

This data was compiled by the Forest Landscape Ecology Lab at the University of Wisconsin - Madison (<http://landscape.forest.wisc.edu/>). It is published here courtesy of David J. Mladenoff.

For more information about the General Land Office Public Land Survey, see Schulte L.A. and Mladenoff D.J. 2001. The original Public Land Survey records: their use and limitations in reconstructing presettlement vegetation. *J. Forestry* 99(10) 5-10.

